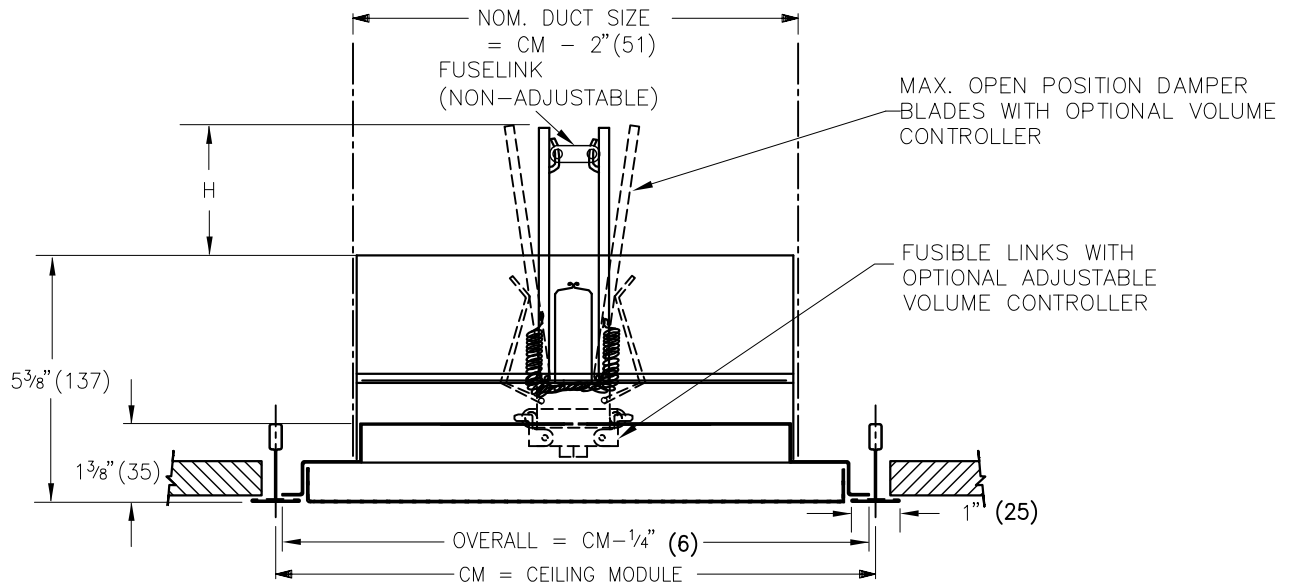


PDDR-FR PLENUM RETURN PERFORATED FIRE RATED DIFFUSER ASSEMBLY



	CEILING MODULE (CM)	NOM. DUCT SIZE (SQUARE)
<input type="checkbox"/>	12x12 (305x305)	10x10 (245x245)
<input type="checkbox"/>	24x12 (610x305)	22x10 (559x254)
<input type="checkbox"/>	16x16 (406x406)	14x14 (356x356)
<input type="checkbox"/>	20x20 (508x508)	18x18 (547x547)
<input checked="" type="checkbox"/>	24x24 (610x610)	22x22 (559x559)
<input type="checkbox"/>	300 x 300	249x249
<input type="checkbox"/>	600 x 300	549x549
<input type="checkbox"/>	400 x 400	349x349
<input type="checkbox"/>	500 x 500	449x449
<input type="checkbox"/>	600 x 600	549x549

SQUARE NECK	
NOM. DUCT	H
10 X 10 (254 X 254)	4 (102)
14 X 14 (356 X 356)	6 (152)
18 X 18 (547 X 547)	8 (203)
22 X 10 (559 X 254)	4 (102)
22 X 22 (559 X 559)	10 (254)

NOTE:

- FIRE RATED 3 HOUR.
- UL CLASSIFIED FIRE RATED CEILING DIFFUSER ASSEMBLY. LISTED IN UNDERWRITERS LABORATORIES FIRE RESISTANCE DIRECTORY.
- ULC CLASSIFIED FIRE RATED CEILING DIFFUSER ASSEMBLY. LISTED IN UNDERWRITERS OF CANADA LABORATORIES LIST OF EQUIPMENT AND MATERIALS.
- DUCT: STEEL OR FLEXIBLE DUCT CONNECTIONS AS PER FIRE RATED DESIGN REQUIREMENTS.
- INSTALLATION INSTRUCTIONS: SEE SUBMITTAL 228791
- FIRE RATED DIFFUSERS ARE TO BE INSTALLED IN FIRE RATED T-BAR APPLICATIONS ONLY.

FINISH:

- ☐ B12 WHITE
(OPTIONAL FINISHES AVAILABLE)

MATERIAL:


- ☐ PDDR - STEEL CONSTRUCTION

OPTIONS:

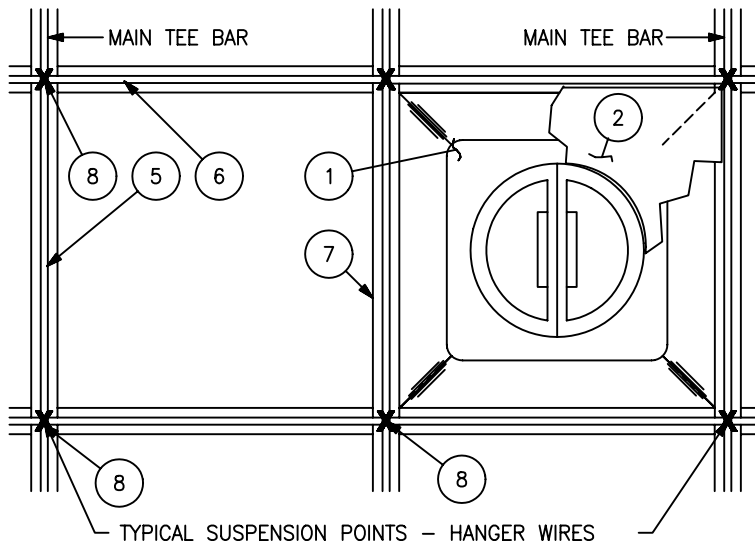
- ☐ ADJUSTABLE VOLUME CONTROLLER
(ALLEN KEY ADJUSTABLE)
- ☐ 165°F (74°C) FUSIBLE LINK (STANDARD)
- ☐ 212°F (100°C) FUSIBLE LINK

ALL METRIC DIMENSIONS () ARE SOFT CONVERTED. IMPERIAL DIMENSIONS ARE CONVERTED TO METRIC AND ROUNDED TO THE NEAREST MILLIMETER.



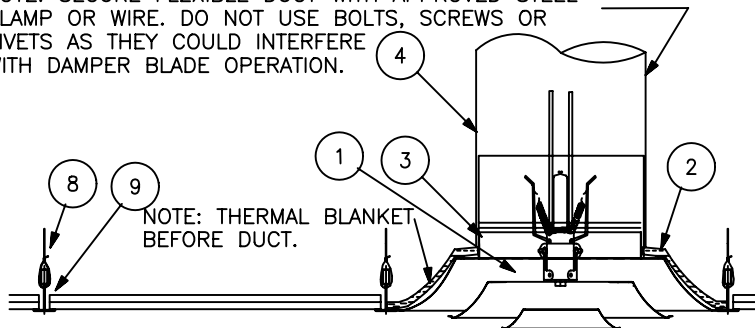
PROJECT: ODD STOCK		PRICE®	
ENGINEER:		 230757	PDDR-FR PLENUM RETURN PERF. FACE DIFFUSER MAXIMUM SQUARE NECK
CUSTOMER:			
SUBMITTAL DATE: 2/3/2021	SPEC. SYMBOL: PDDR-FR/1/12/3/24/24		

SQ. CONE & PERF. FIRE RATED DIFFUSER INSTALLATION INSTRUCTIONS



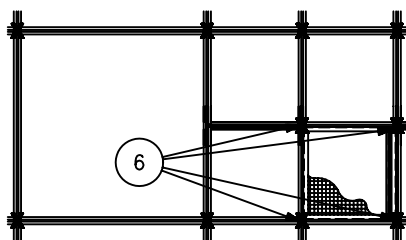
STEP "A" CEILING GRID LAYOUT

NOTE: SECURE FLEXIBLE DUCT WITH APPROVED STEEL CLAMP OR WIRE. DO NOT USE BOLTS, SCREWS OR RIVETS AS THEY COULD INTERFERE WITH DAMPER BLADE OPERATION.



STEP "B" FLEXIBLE DUCT CONNECTION

(CROSS SECTIONAL DETAIL OF DIFFUSER INSTALLATION)



**INSTALLATION OF 12" x 12" OR
300mm x 300MM SCD FR**



INSTALLATION INSTRUCTIONS

1. FOLLOW STEPS "A" & "B" AS SHOWN.
2. THE FLEXIBLE AIR DUCT SHALL BE CLASS "0" OR CLASS "1" UL CERTIFIED (SEE UL GAS & OIL EQUIPMENT DIRECTORY). THE MAX LENGTH SHALL NOT EXCEED 14'-0" (4267). WHERE FLEX. AIR DUCT SUPPORT IS REQUIRED, USE STEEL STRAPS AND #12 SWG STEEL HANGER WIRE.
3. THE 4'-0" CROSS TEES MUST HAVE SLOTS IN THE WEB FOR CONNECTING THE 2'-0" CROSS TEES. END TABS OF THE 2'-0" CROSS TEE MUST BE BENT BACK AGAINST THE WEB OF THE 4'-0" TEES.
4. SUSPEND CEILING TEES INDEPENDENTLY AT THE 4 CORNERS OF DIFFUSER ASSEMBLY. USE #12 SWG GALVANIZED STEEL HANGER WIRE AND SECURE TO THE FLOOR OR ROOF ABOVE.
5. MAXIMUM ROUND NECK SIZE OF THE FIRE RATED DIFFUSER ASSEMBLY IS 15" (381) DIAMETER.
6. NO DIFFUSER & CEILING RADIATION DAMPER ASSEMBLY SHALL BE LOCATED IN AN ADJACENT 24" X 48" (610 X 1219) CEILING MODULE.
7. INSTALLATION OF 12"X12" (304X304) DIFFUSER ASSEMBLY IS SIMILAR TO THE ABOVE. REWORK TEE BAR AND GRID TO PROVIDE 4- CORNER TEE SUSPENSION OF 12"X12" (304X304) ASSEMBLY. END TABS OF ALL CROSS TEE BARS MUST ENTER SLOTS IN CONNECTING TEES AND MUST BE BENT BACK AGAINST THE WEB OF THE CONNECTING TEES.
8. INSTALLATION OF THERMAL BLANKET ON THE DIFFUSER ASSEMBLY IS DONE AT THE FACTORY. HOWEVER IF IT NEEDS TO BE REMOVED AND REINSTALLED, FIT THE BLANKET OVER THE DIFFUSER NECK BEFORE DUCT IS FASTENED. THERMAL BLANKET MUST TOTALLY COVER THE BACKPAN.

TYPICAL COMPONENTS


BY PRICE INDUSTRIES:

1. SQUARE CONE DIFFUSER C/W CEILING RADIATION DAMPER
2. THERMAL BLANKET CK-2000-B

BY OTHERS:

3. - STEEL (NECK) CLAMP - OR WIRE.
4. - AIR DUCT (FLEXIBLE OR RIDGID)
5. - MAIN TEE RUNNER
6. - CROSS TEE BAR 4'-0" OR 1200mm
7. - CROSS TEE BAR 2'-0" OR 600mm
8. - SUSPENSION HANGER WIRE.
9. - CEILING TILE OR PANEL

ALL METRIC DIMENSIONS () ARE SOFT CONVERTED. IMPERIAL DIMENSIONS ARE CONVERTED TO METRIC AND ROUNDED TO THE NEAREST MILLIMETER.

PROJECT: ODD STOCK		PRICE[®]	
ENGINEER:		 228791	SQ.CONE & PERF.
CUSTOMER:			DIFFUSER AND CEILING RADIATION DAMPER ASSEMBLY
SUBMITTAL DATE: 2/3/2021	SPEC. SYMBOL: PDDR-FR//12/3/24/24	APRIL 2002	INSTALLATION INSTRUCTIONS